

AccuPoint[®]

The AccuPoint ATP system has been engineered to be the easiest and most powerful sanitation monitoring system. Its unequalled features include:

- ☀ A simple, symbols-based character set and optional automatic station incrementing.
- ☀ A solid-state monitor that uses photo-diode technology to provide years of rugged, reliable operation.
- ☀ Rechargeable nickel-metal-hydride batteries that provide longer operation and off-the-shelf battery replacement — with no memory degradation.
- ☀ A built-in charge indicator.
- ☀ A revolutionary docking station that provides the easiest battery recharging and computer interface. Just placing the unit in the docking station recharges its batteries and allows easy uploading of sampling data.
- ☀ Water sampling devices for use in the food and beverage industry, and industrial and environmental applications such as cooling towers and process water.
- ☀ Easy field cleaning and calibration.
- ☀ AccuPoint features a small, lightweight ergonomic design making it easily transportable and easy to use.
- ☀ Dimensions: 5 3/8" x 3 1/4" x 1 3/4"
(136.5 mm x 82.6 x 44.5 mm)
- ☀ Weight: 12.9 oz (365 g)
- ☀ Optional belt holster available.
- ☀ Best of all, the AccuPoint system is backed by Neogen, a world leader in providing science-based, food safety solutions.

*The Easiest-To-Use
Sanitation Monitoring
System Ever Made*

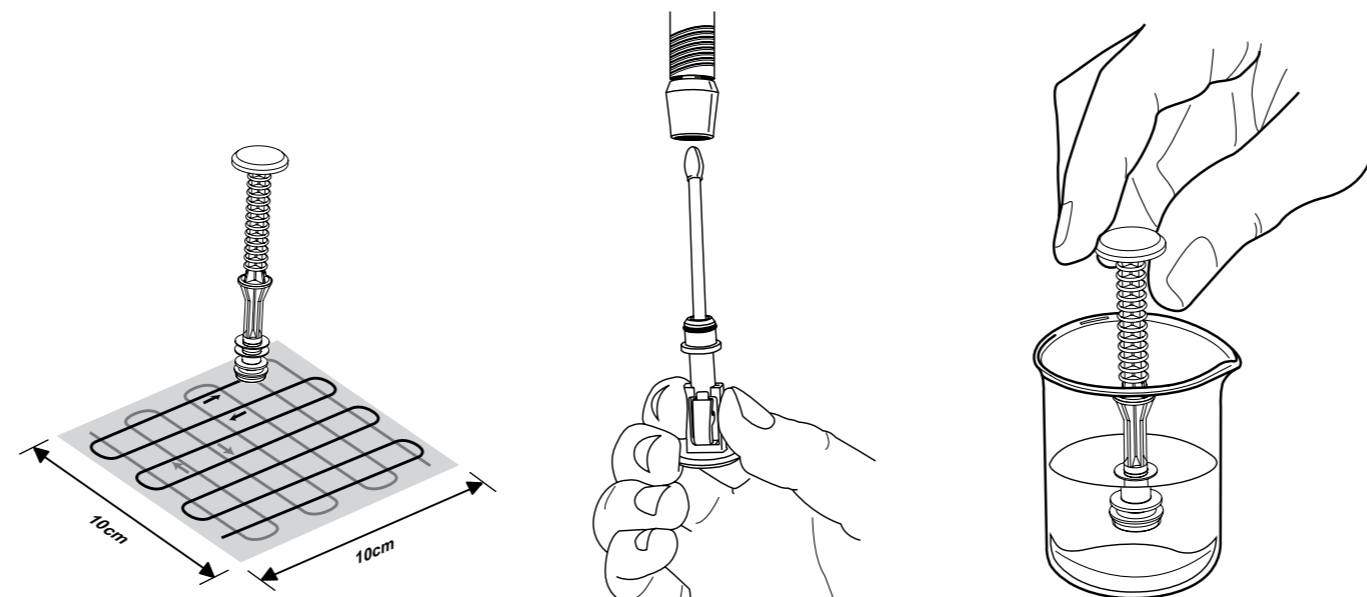


The AccuPoint ATP Monitoring System is based on the measurement of adenosine triphosphate (ATP)—a substance found in all living cells.

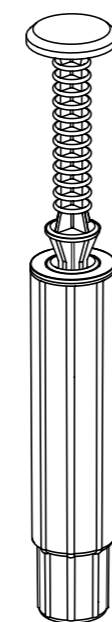
When ATP contacts the firefly reagent luciferin luciferase, a reaction takes place that produces light. The AccuPoint instrument simply measures this light output. The higher the levels of food residue and microorganisms on a production surface, the more ATP, and the more light that is produced.

The ability to quickly, easily and accurately monitor cleaning standards before production starts helps ensure lower levels of microorganisms in finished product and a decreased risk of recalls.

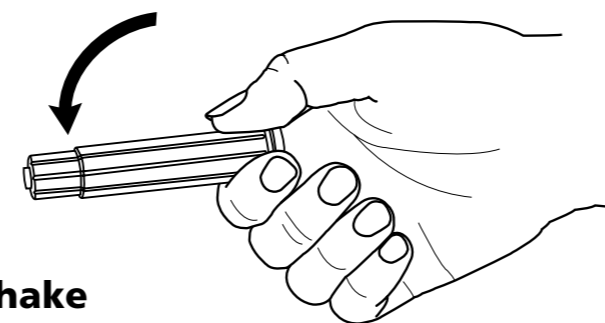
**AccuPoint makes it
as easy as 1, 2, 3**



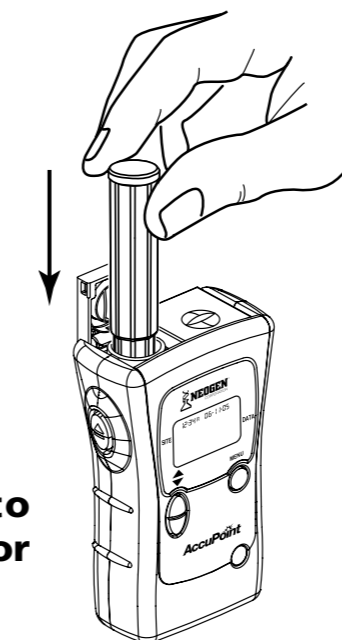
1. Sample surface or water



**2. Insert sampler into
cartridge and de-
press to activate.**



3. Shake



**4. Insert cartridge into
instrument, close door
and read results.**

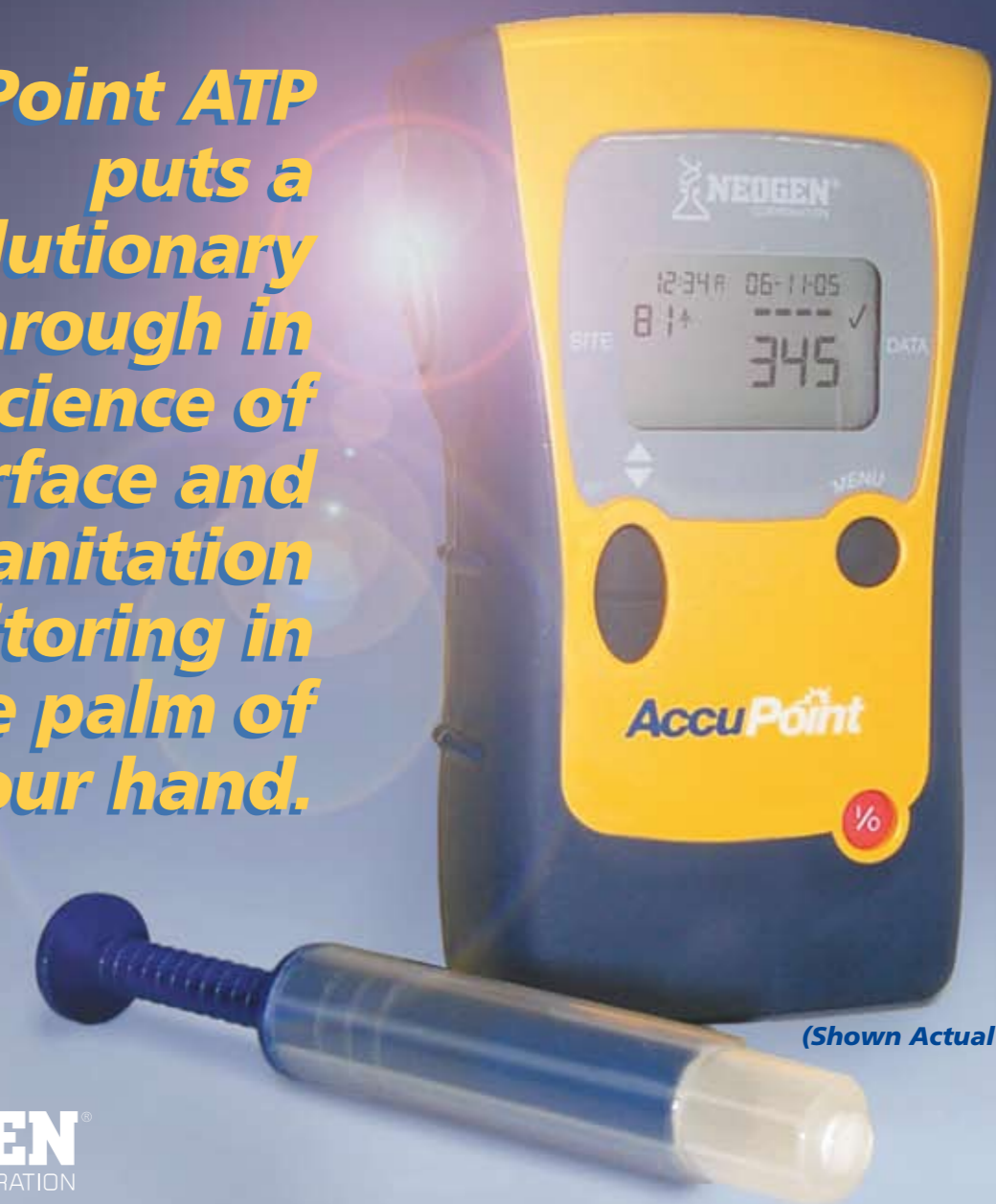


Manufactured by:
NEOGEN
CORPORATION
620 Leshar Place, Lansing, MI 48912
517/372-9200 • fax: 517/372-2006

Distributed by:

Simply Brilliant Science

*AccuPoint ATP
puts a
revolutionary
breakthrough in
the science of
surface and
water sanitation
monitoring in
the palm of
your hand.*



(Shown Actual Size)

AccuPoint®

ACCUPOINT'S EXTRACTION SAMPLER MAKES IT BETTER.

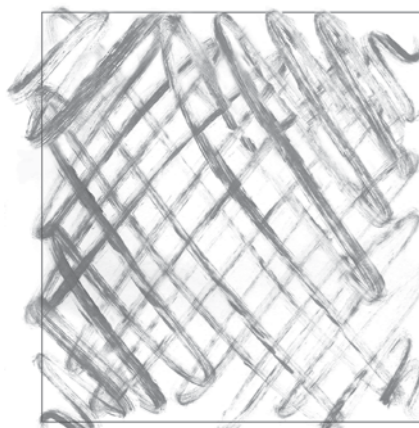
The unique design of the AccuPoint sampler allows greater sample precision and consistency. Unlike traditional swabs, the sampler utilizes a large surface-area sample pad to extract ATP from the work surface.

The pad surface and vertical sampling technique allow different users to get more consistent results than flexible swabs that must be flexed and rotated. The pad covers the sample area completely, leaving virtually no gaps.

The vertical sampling technique allows increased downward pressure on the surface. This facilitates both the penetration into surface crevasses as well as the breaking-up of existing biofilms and the capture of previously protected organisms.

The sponge will reabsorb the liquid along with any organic matter and bacteria for consistent and accurate results.

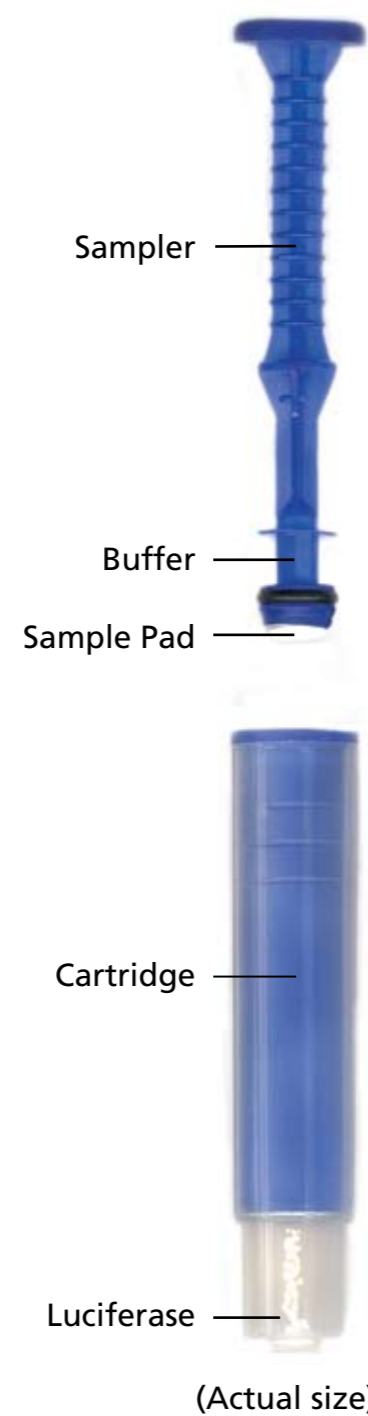
The sponge surface is flexible, allowing access into tight grooves, conforming to irregular or curved surfaces such as pipes, as well as tight corners.



Traditional swab sample pattern



AccuPoint sample pattern



AccuPoint SAMPLERS ARE PRECISION ENGINEERED FOR EACH SPECIFIC APPLICATION

Three choices to fit your sanitation monitoring needs

AccuPoint SURFACE SAMPLER

Consistency is the key to a successful sanitation monitoring program. AccuPoint's Surface Sampler is the perfect choice for consistent sampling for most food contact surfaces, from flat food prep areas to all types of processing equipment.



AccuPoint ACCESS SAMPLER

AccuPoint's unique Access Sampler was created specifically for testing tight spaces, such as filler heads. Its easy-to-use design provides consistently accurate results.

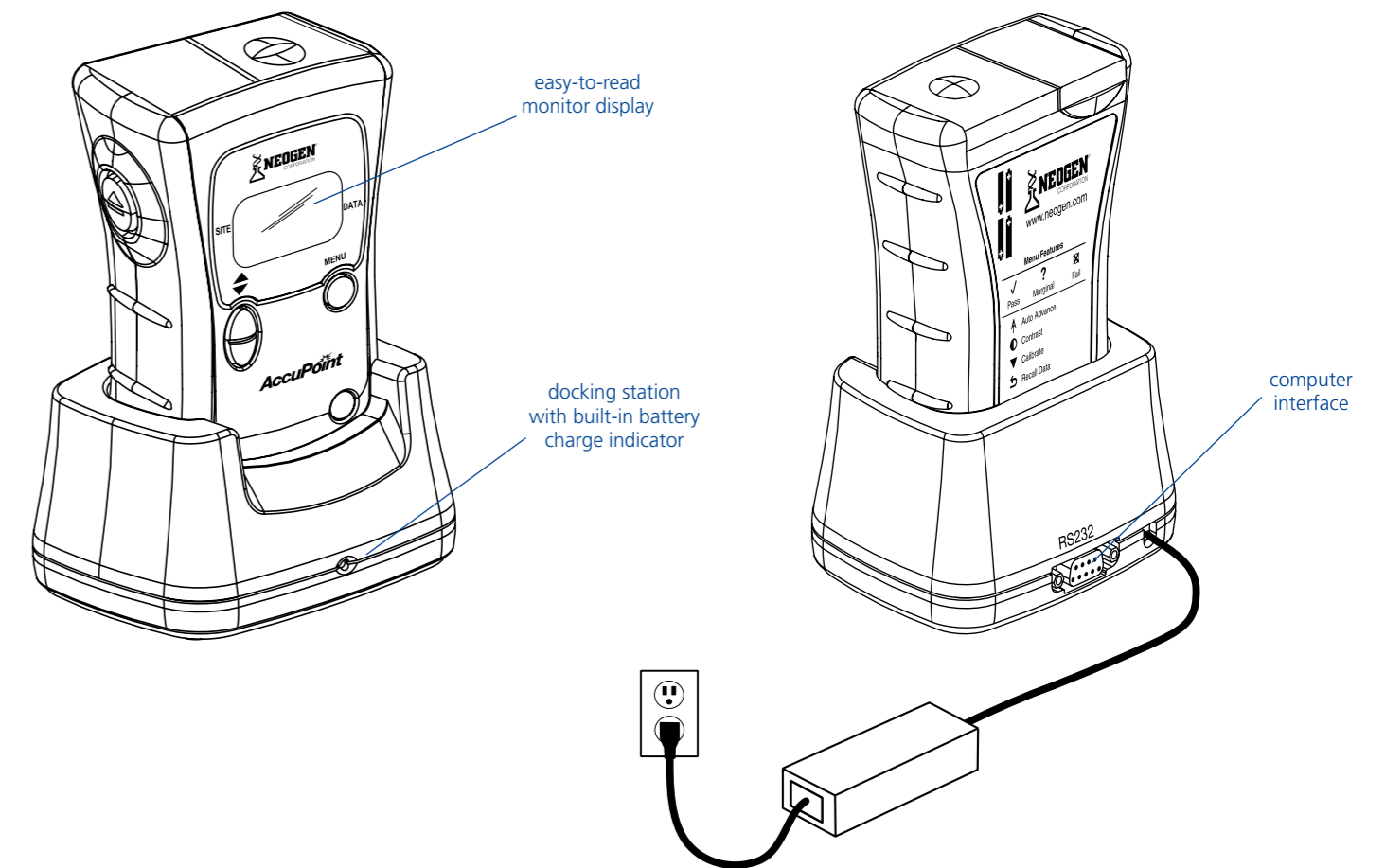
AccuPoint LIQUID SAMPLER

AccuPoint's Liquid Samplers feature precision engineered collection pads and reagents to make them the samplers of choice for accurately sampling liquid for the presence of ATP.



UNIQUE DOCKING STATION MAKES IT EASIER.

AccuPoint's docking station provides a seamless, easy interface with PCs providing one-touch upload as well as a built-in battery charger. AccuPoint's battery utilizes NiMH technology, preventing overcharging and battery memory degradation, ensuring years of reliability. Its battery offers 15 hours of continuous operation, more than twice as much as any other on the market.



CLEAN ROOM PRECISION.

AccuPoint offers the most precise technology available today. To ensure accuracy, the extraction samplers are manufactured under cleanroom conditions. AccuPoint is the only ATP monitoring system built on such exacting standards.

WINDOWS-COMPATIBLE SOFTWARE MAKES IT MORE USEFUL.

AccuPoint comes with Data Manager software that allows customers to: upload results to a PC, set pass/caution/fail levels, create and print trend analysis graphs, export data to spreadsheets, and keep a record of sanitation effectiveness to verify SSOPs. Results can be presented in a clear chart format showing the actual measurement in color coded green (pass), yellow (caution) and red (fail) for extra clarity. Accumulated results can be graphed using bar or pie charts, over a variety of criteria, for clear pictures of sanitation testing results and trends.

