

AccuPoint²

Choosing the test sites for sampling has never been easier. The AccuPoint 2 system now has several different options:

- Manually toggle to the appropriate test location by site number, site group or site name.
- Have the AccuPoint 2 system select your sites at random. Simply select the "random" option in the Site Name field.
- Create your sample plan in the Data Manager program and download it to the AccuPoint 2 instrument. You can select a random set of points from your total Test Plan or have the software select a defined number from each Site Group at random. Or if you want to control the test sites, select the ones for testing manually. You can even create a sample plan with points selected at random and manually. When you're done, simply download the sample plan to the AccuPoint 2 instrument.

Distributed by:



620 Leshler Place, Lansing, MI 48912
800/234-5333
517/372-9200 • fax: 517/372-2006
foodsafety@neogen.com • www.neogen.com

©Neogen Corporation, 2009. AccuPoint and Neogen are registered trademarks of Neogen Corporation, Lansing, MI. All other trademarks copyright of their respective companies.

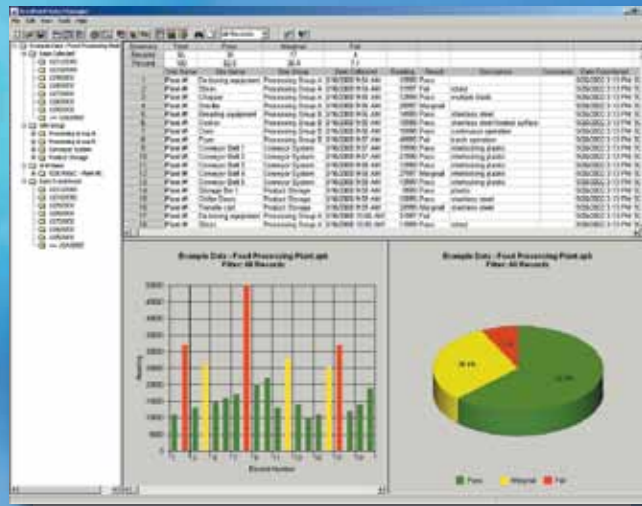
FS001-0909

AccuPoint²

THE NEXT GENERATION OF ATP SANITATION MONITORING



**Real-Time ATP
Cleaning Validation
and Tracking System from
the Leader in ATP Sanitation
Monitoring Systems**



WINDOWS-COMPATIBLE SOFTWARE

AccuPoint comes with Data Manager software that allows users to:

- Upload results to a PC
- Set pass/caution/fail levels
- Create and print trend analysis graphs
- Export data to spreadsheets
- Keep a record of sanitation effectiveness to verify SSOPs.



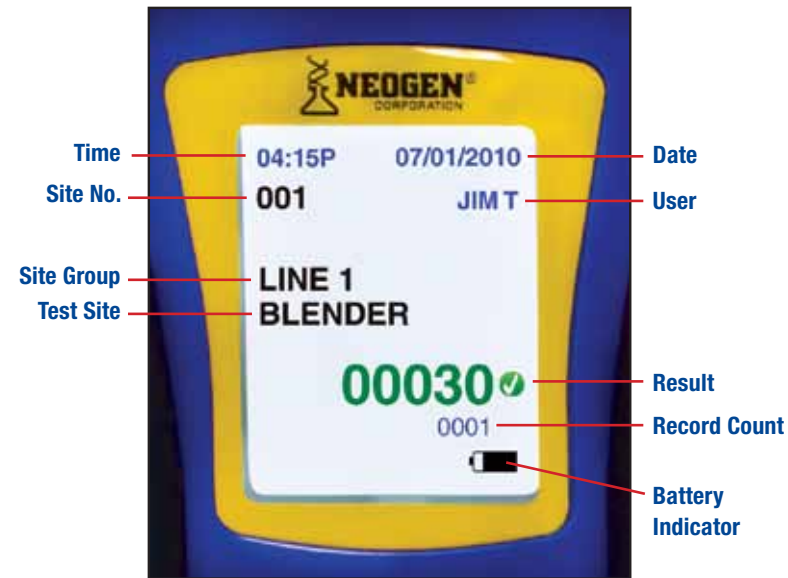
Results can be presented in a clear chart format showing the actual measurement in color coded green (pass), yellow (caution) and red (fail) for extra clarity. Accumulated results can be graphed using bar or pie charts, over a variety of criteria, for clear pictures of sanitation testing results and trends.

AccuPoint²

A new level of ease-of-use and flexibility

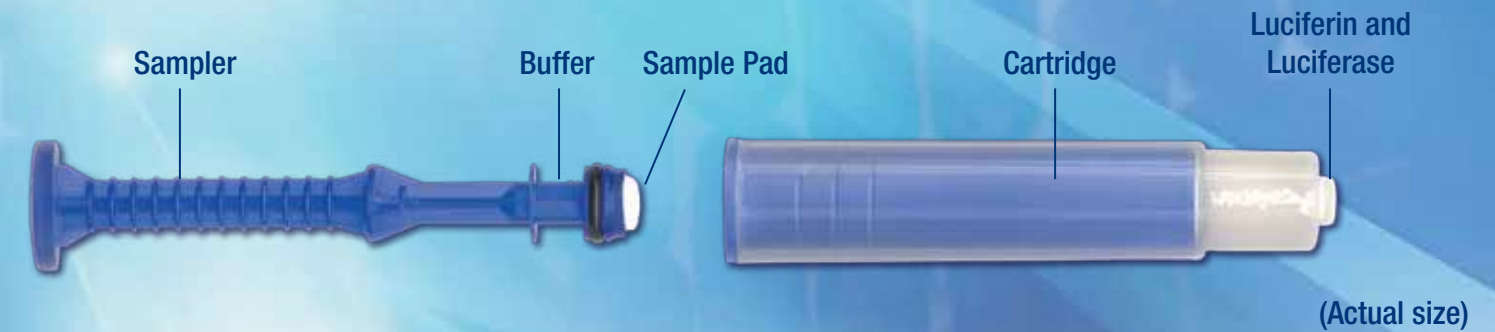
The AccuPoint 2 system has been engineered to build on the original system's ease-of-use with significantly enhanced site information on the display, additional site selection options, faster data processing and transfer.

- As with the original AccuPoint system, intuitive symbols are used to provide a universal interface.
- Leading edge circuitry and enhanced light detection from the latest generation in silicon photo-diode technology.
- All site information—site name, number, group and testing type (water or surface)—appear on the display. The information is entered through the Data Manager software and downloaded for permanent storage.
- User information can be selected and recorded with the testing results.
- Up to 999 unique test sites can be accommodated.
- A record count is displayed to keep track of the number of tests taken since the instrument was powered on.
- A complete self-test occurs at power-on, with the results displayed on the screen to provide you with the confidence to know the system is working as it should.
- Real-time random site selection allows you to pick the sites you want to test at random while walking through your facility.
- An improved USB interface makes transfer of data to and from the instrument and the Data Manager software fast and easy.

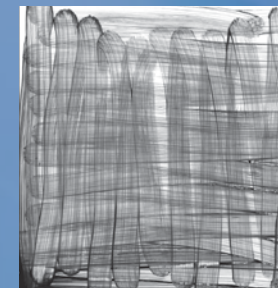
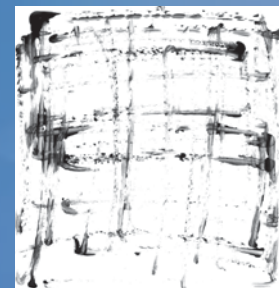


The AccuPoint system provides consistent, reliable test results and accurate record keeping to maximize the effectiveness of your sanitation programs.

PRECISION ENGINEERED SAMPLERS



The unique design of the AccuPoint sampler allows greater sample precision and consistency. Unlike traditional swabs, the sampler utilizes a large surface-area sample pad to extract ATP from the work surface.



The pad surface and vertical sampling technique allow different users to get more consistent results than flexible swabs that must be flexed and rotated. The pad covers the sample area completely, leaving virtually no gaps.

The vertical sampling technique allows increased downward pressure on the surface. This facilitates both the penetration into surface crevasses as well as the breaking-up of existing biofilms and the capture of previously protected organisms.

The sponge will reabsorb the liquid along with any organic matter, including bacteria, for consistent and accurate results.

The sponge surface is flexible, allowing access into tight grooves, conforming to irregular or curved surfaces such as pipes, as well as tight corners.

THREE DESIGNS TO FIT YOUR SPECIFIC SANITATION MONITORING NEEDS



AccuPoint Surface Sampler

Consistency is the key to a successful sanitation monitoring program. AccuPoint's Surface Sampler is the perfect choice for consistent sampling of most food contact surfaces, from flat food prep areas to all types of processing equipment.

AccuPoint Access Sampler

AccuPoint's unique Access Sampler was created specifically for testing tight spaces, such as filler heads. Its easy-to-use design provides consistently accurate results.

AccuPoint Liquid Sampler

AccuPoint's Liquid Samplers feature precision engineered collection pads and reagents to make them the samplers of choice for accurately sampling liquid for the presence of ATP.